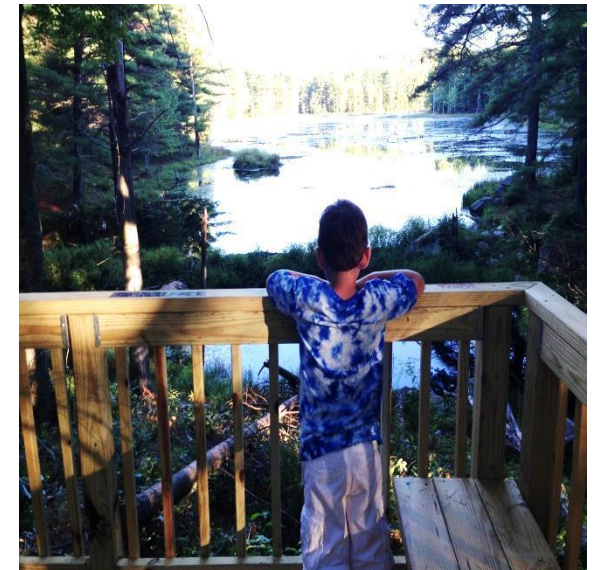
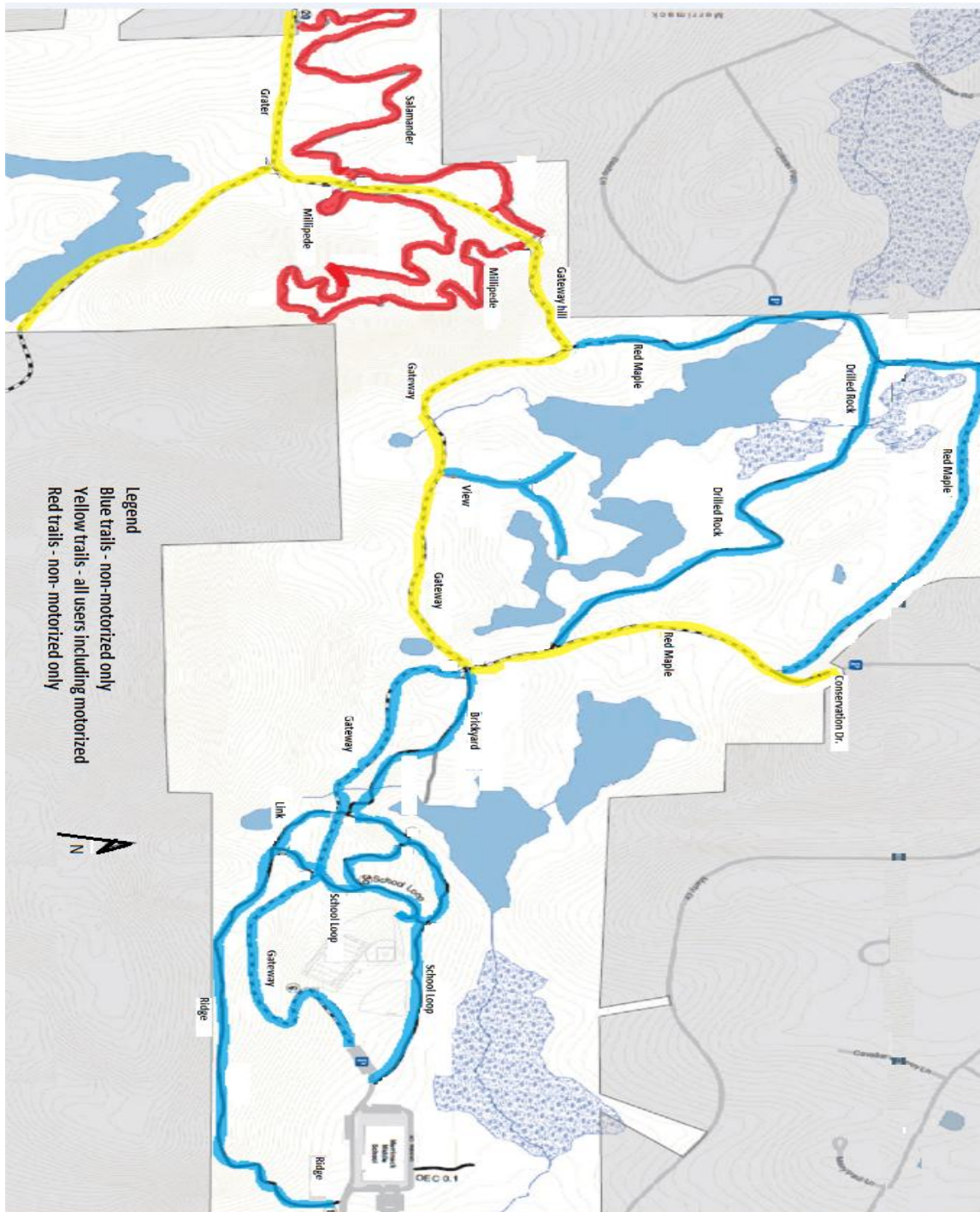


Welcome to Grater Woods

Permitted uses and trail guide
For more detailed information visit us at:

<http://www.merrimackoutdoors.org/our-properties/grater-woods/>



This guide has been prepared by the Grater Woods Subcommittee of the Merrimack Conservation Commission to inform all users of the permitted trail and property usage to minimize trail and other conflicts.

A trail map can be found on the backside of this pamphlet.

Trail Categories:

The Grater Woods Trail System currently includes three categories of trails. Each Category will be representative of the type of usage the trail was designed to support. Each category is identified on the trail map using a unique graphic line format and color. The color used on the map to identify each category is also used to mark the trails themselves. Mis-use or abuse of Grater Woods or its trail system is reported to local authorities.

Posts are placed at critical junctions with trail names, directional arrows and, in some forested area as user-friendly and compatible with the primary MCC Master Plan goals.

In General, all trails are open to non-motorized use and only the trails noted in yellow (*Designated with Yellow Rectangular markers*) allow for motorized use.

Trail Design, Future Trail Creation and Trail Modifications:

The design concept of all new trails must be presented to the MCC prior to creation. It is the responsibility of the MCC to review new trail requests and ensure that all proposed design elements fit within the principles and guidelines, as presented by the Best Stewardship Practices for Forestry prior to approving the new plans.

Trails should be created with many factors taken into consideration including but not limited to the following:

- Local, State and Federal regulations and associated governing documentation
- Loop creation around the open space
- Accessibility to new and/or existing parking areas
- Sustainability of the *trail* being added
- User demand / suggestions from the public
- Multi-user designation
- Access to new and interesting areas within Grater Woods
- *Trail* upkeep
- Impact to abutters
- Map and Stewardship plan rework

Dog walkers are always welcome but please remember to pick up after your Pets.

Again the purpose of Grater Woods is for all residents to be able to use and enjoy the area while minimizing user conflicts.

Enjoy the space and remember to keep Grater Woods in the same condition as you found it (pack it in, pack it out).

Thank you from the Grater Woods sub-Committee!

Contact information

Contact Grater Woods at

Email: merrimackoutdoors@merrimackNH.gov

Phone: Tel: (603) 424-3531

Contact Merrimack Police at

Phone: 603-424-3774

For emergency contact call 911